

Weekly Project Update

Project: Little McDonald
Outlet to Otter Tail River
Location: Otter Tail County, MN

Client: LMKP LID

Moore Engineering Project No.: 18632A

Week End Date: May 18, 2018

Project Field Contact: Ben Skaaland
(218) 396-0593
Lyle Hansen
(218) 849-1055

This field report shows observations while on the construction site.

Little McDonald

Lake Outlet Project

Part A & B

General Contractor Part A :

Geislinger and Sons, Inc.

Subcontractors:

Ackling Construction
Northern Dewatering, Inc.

General Contractor Part B :

Sellin Brothers, Inc

Subcontractors:

Northern Dewatering, Inc.
Jim Ramsey Tree Service
Andy Francis Construction
Robert R. Schroeder Construction
3D Specialties
Sherbrooke Turf

Report Distribution

LMKP LID
Otter Tail County

Reporting Period

May 12, 2018 – May 18, 2018

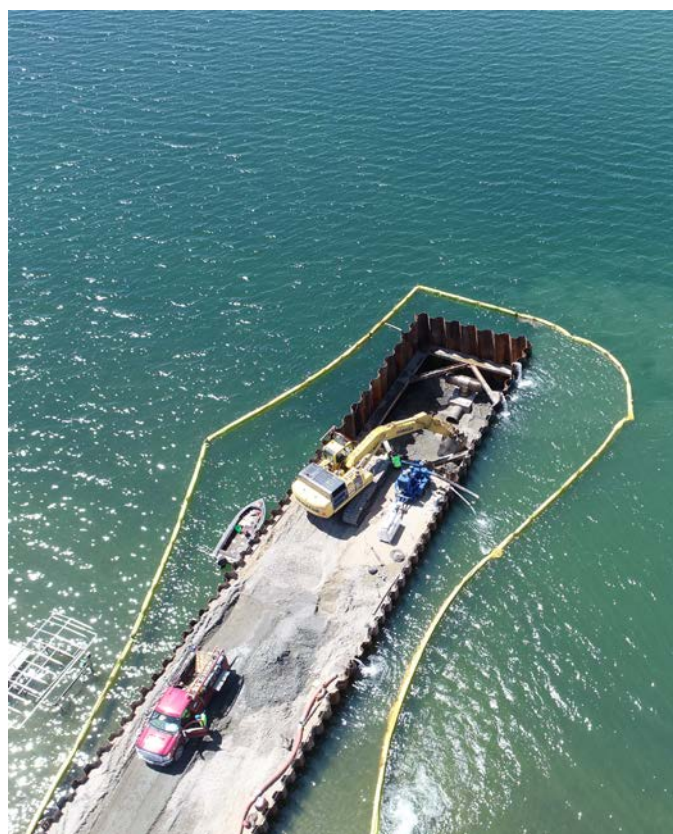


Figure 1: Installation of Intake Screen and Pipe

Summary of Work Performed by Contractor:

Part A:

- Geislinger completed excavation for the footings on the pump house.
- Magney Construction set forms and rebar for footing on the pump house.
- Magney Construction set embedded metal plates in footings to prepare for precast walls.
- Ally Concrete Pumping pumped concrete to footings on the pump house.

Part B:

- Northern Dewatering had to mobilize back on site and install additional dewatering wells because the area was too wet to install the intake and backwash lines between the East Little McDonald Drive and the lake.
 - Northern Dewatering crew has been on-site to monitor the dewatering operations.
- Sellin Bros. has 2 crews on site:
 - Crew One: Installing 24" forcemain pipe.
 - Crew Two: Installing 30" intake pipe, 8" backwash line, and assisting with dewatering operations.
- Sellin Bros. installing 24" forcemain pipe.
 - Monday - 220 feet installed.
 - Tuesday - 280 feet installed.
 - Wednesday - 425 feet installed.
 - Thursday - 480 feet installed.
 - Friday - 200 feet installed.
 - Total length of pipe installed this week = 1,605 feet
- Sellin Bros. installing 30" intake pipe, from the pump house to East Little McDonald Drive.
 - Monday - 0 feet installed
 - Tuesday - 29 feet installed, 30" Ductile Iron
 - Wednesday - 112 feet installed, 30" PVC
 - Thursday - 140 feet installed, 8" PVC
 - Friday - 0 feet installed
- Sellin Bros. installed 8" discharge line from the pump house to East Little McDonald Drive.
- Schroeder continues to apply sealing compound to the joints to prevent the sheet piling from leaking.
- Sellin Bros. installed 15" CMP culvert on 450th Street.
- Sellin Bros. installed the intake structure within the sheeting in the lake.

Challenges and Solutions:

- Dewatering operations have not gone as well as planned with the areas not being dewatered enough to install the pipe → Installed more dewatering wells.
- Continued issues with sightseers and trespassers, particularly at the location of the inlet structure → Meeting was held with landowners and contractors to address issues, additional signage and fencing installed, law enforcement patrols have been monitoring the roadway.
- Unmarked irrigation lines have not been installed → Further coordination with MVI was done to work towards a date of installation.

Percent of Work Completed:

Part A (Pump Station): 25% of structure complete (based on contract value completed to date). Concrete footings were poured for the pump house.

Part B (Forcemain): 80% of pipe installed, Intake structure installed this week, Installed 10 ft X 10 ft pressure sustaining structure along 450th Street.

QA/QC Testing/Inspecting Performed and Results:

Part A

- Compaction tests were taken on the subgrade of the footings for the pump house → 4 tests taken, all were over 98% and passed.
- Concrete forms for pump house footings were measured.
- Rebar for pump house footings were inspected.
- Air and slump tests were taken on the concrete and cylinders were cast.
- Embedded metal plates were measured for placement on footings.
- Curing compound placed on top of concrete footings.

Part B

- Grades checked on manhole and pipe installation.

Upcoming Scheduled Work:

- Sellin Bros. is continuing installing 24" forcemain.
- Sellin Bros. will install 30" intake line and 8" discharge line.
- Magney Construction to install precast walls on the footings after the concrete is cured.
- Schroeder to remove sheet piling after pipe installation.
- MVI to begin reinstallation of irrigation line.

Meetings:

- LMKP LID June 6, 2018 3pm
- Construction meeting – none scheduled



Figure 2: Intake Pipe In Progress



Figure 4: Installation of Intake Screen



Figure 3: Close-up of Intake Screen Install



Figure 5: Installation of Footings of Pump House



Figure 6: Seeding Restoration



Figure 8: Embedded Plate for Precast Walls



Figure 7: Concrete Installation

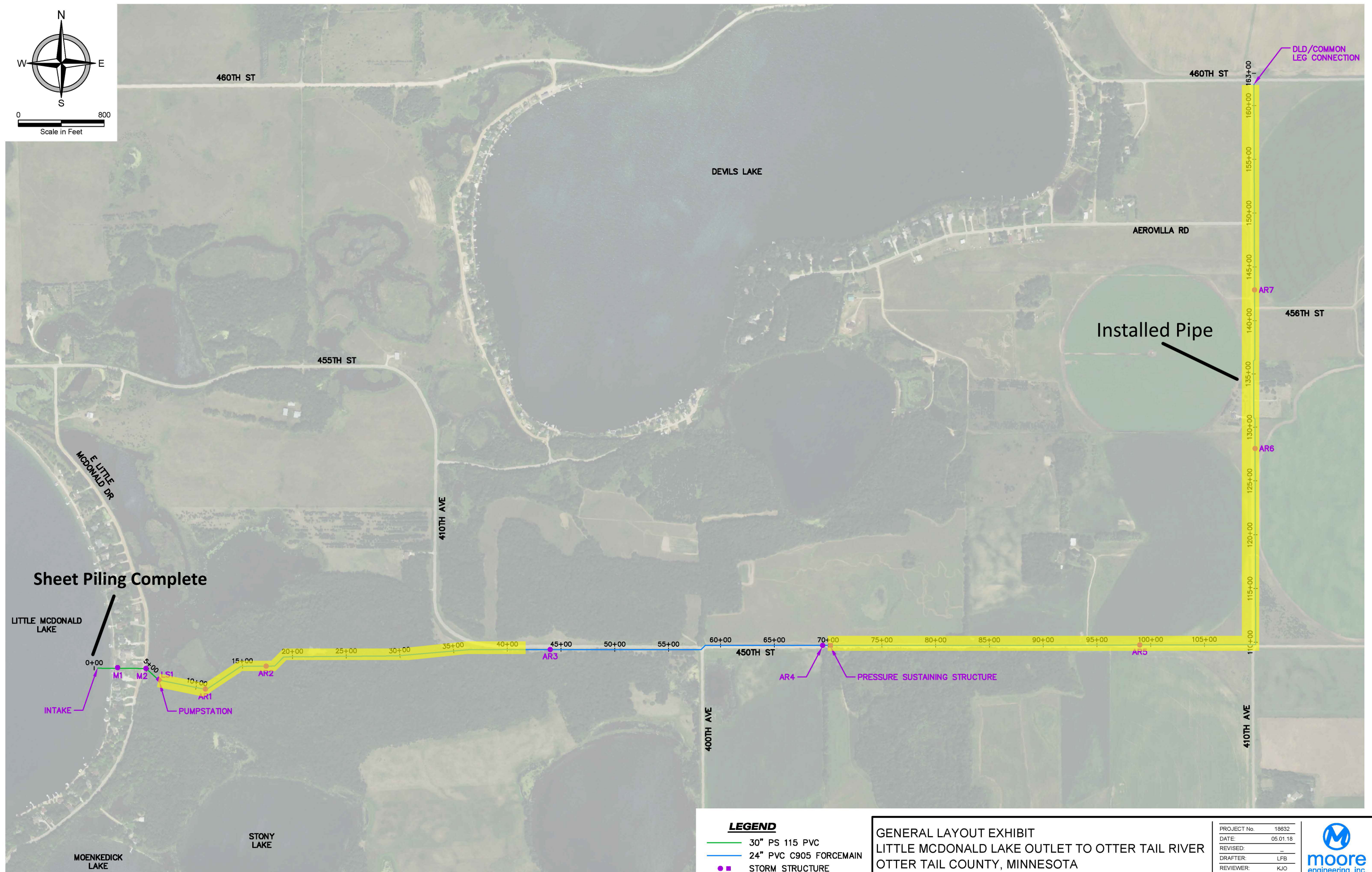
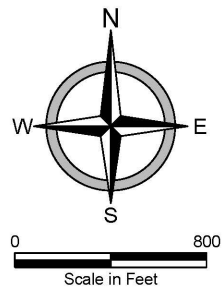


Figure 9: Concrete Pumping



Figure 10: Installing Valve

FILE LOCATION: R:\Civil 3D Projects - FFalls\18632 LITTLE MAC OUTLET\DRAWINGS\DESIGN\18632-pp east route.dwg



LEGEND

- 30" PS 115 PVC
- 24" PVC C905 FORCEMAIN
- STORM STRUCTURE

GENERAL LAYOUT EXHIBIT
LITTLE MCDONALD LAKE OUTLET TO OTTER TAIL RIVER
OTTER TAIL COUNTY, MINNESOTA

PROJECT No.	18632
DATE:	05.01.18
REVISED:	-
DRAFTER:	LFB
REVIEWER:	KJO

